

Sodak Construction 1110 Plan

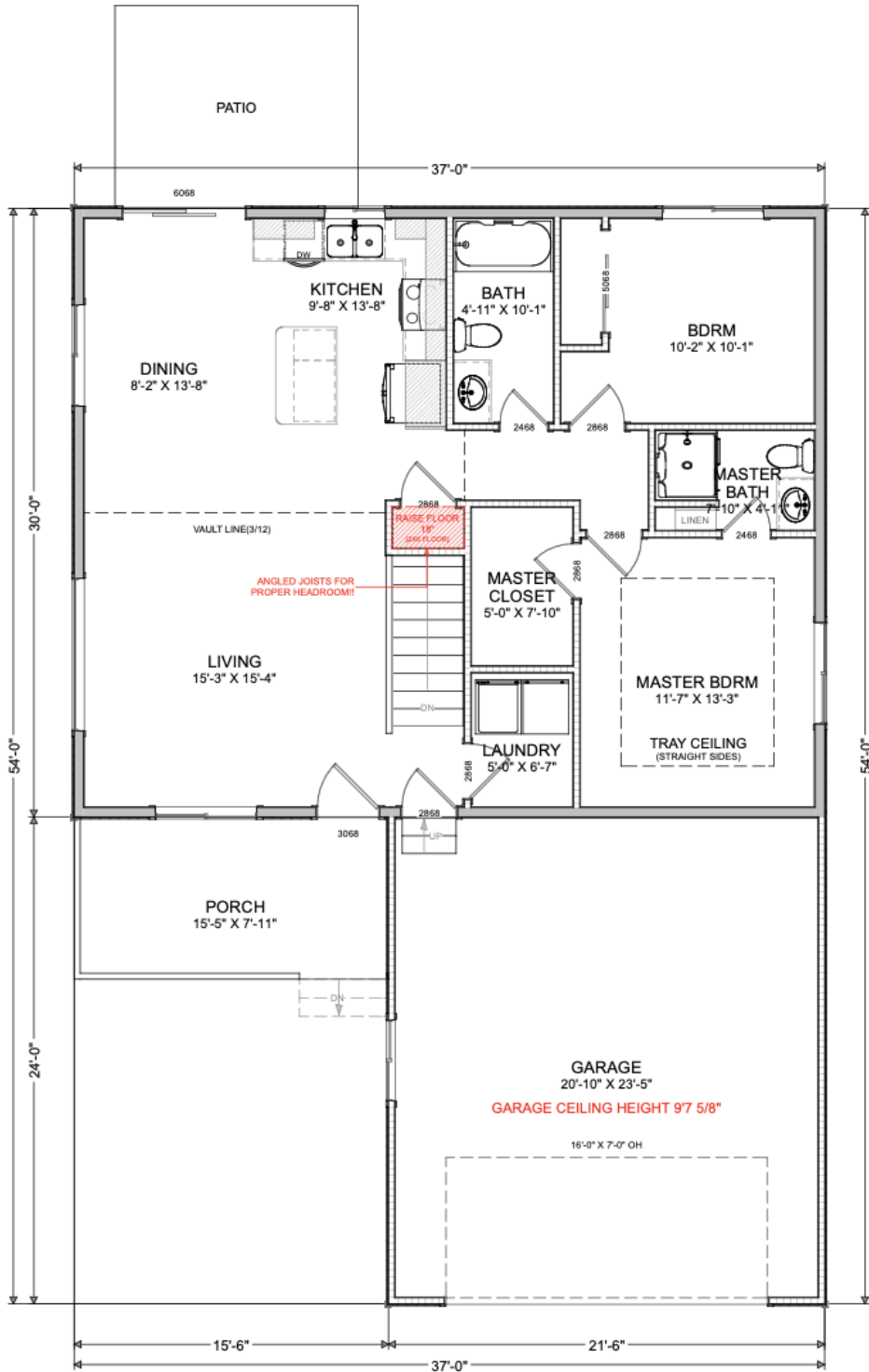


Main Level Floor Plan

HAMLIN
Building Center
www.hamlinbc.com

REVISIONS
PLAN: Y

FIELD VERIFY ALL DIMENSIONS!!
ALL EXTERIOR DIMENSIONS
ARE TO THE OUTSIDE OF
FRAMING/CONCRETE!!



SODCON
1110 RANCH
LOCATION IF KNOWN

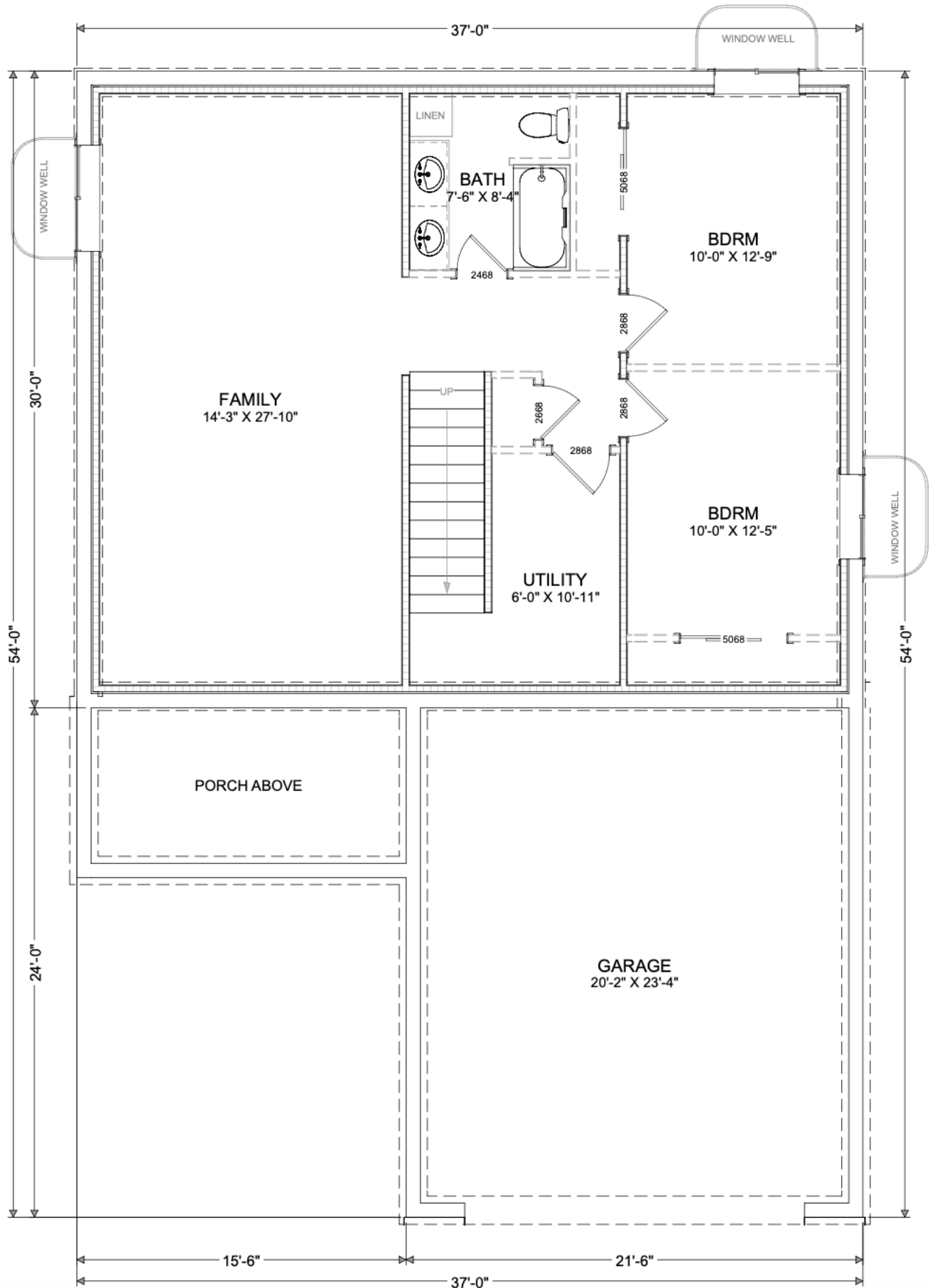
MAIN FLOOR:

APPROX. 1110 SQ-FT

8' CEILINGS
(UNLESS OTHERWISE NOTED)

18" OVERHANGS ALL AROUND

Future Basement Plan



Details

- 1110 Square Feet
- 2 bedrooms, 2 bathrooms
- Unfinished Basement
- 2-Stall Unfinished Garage
- Standard Finishes
- Gas Furnace w/ AC
- Vinyl Plank
- Carpet in Bedrooms & on Steps
- James Hardie Siding
- Real Stone
- Seed, Sprinkler, Rock & Edging